

## WINTER TREE ID

<b>Alder</b> <i>Alnus glutinosa</i>	<b>Twig:</b> Rich purple with raised orange warty marks
	<b>Buds:</b> Purple buds on short stalks and arranged spirally around the twig, buds with 2 or 3 bud scales
	<b>Bark:</b> Purple brown to dark grey-brown cracked into square plates
	<b>Other:</b> Often has cones and catkins

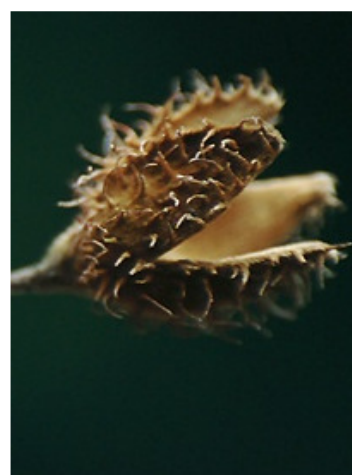


<b>Ash</b> <i>Fraxinus excelsior</i>	<b>Twig:</b> Pale slightly greenish grey and flattened around buds
	<b>Buds:</b> Black hard buds, arranged in opposite pairs, bud scales present
	<b>Bark:</b> Grey, smooth at first but soon acquiring shallow vertical fissures
	<b>Other:</b> Lower branches tend to curve downward then upward near the tip

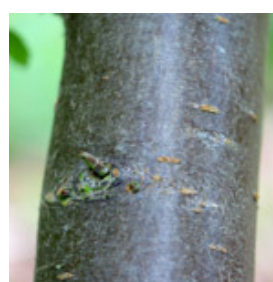


## WINTER TREE ID

<b>Common Beech</b> <i>Fagus sylvatica</i>	<b>Twig:</b> Dull purplish brown, hairy, no thorns
	<b>Buds:</b> Slender and pointed, arranged alternately, NEVER hugging stem, bud scales brown to dark, one terminal bud only
	<b>Bark:</b> Nearly always silvery grey, no horizontal marks
	<b>Other:</b> lower branches about 2 metres from the ground retain their spent brown leaves through winter, no catkins, Four lobed spiky seed case

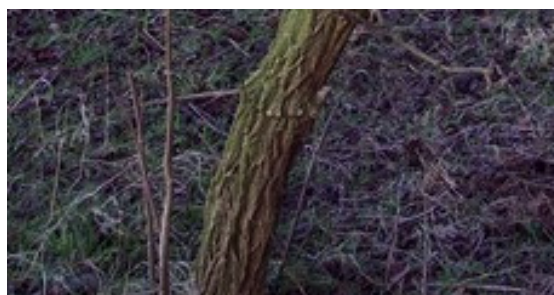


<b>Blackthorn</b> <i>Prunus spinosa</i>	<b>Twig:</b> Large spines present (up to 5 cm long), Often hairy
	<b>Buds:</b> Situated along spines, with or without blue-black berries
	<b>Bark:</b> Black and when old, broken into small square plates
	<b>Other:</b> Often planted in hedgerows

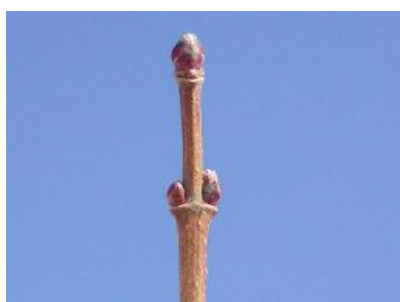


## WINTER TREE ID

<b>Elder</b> <i>Sambucus nigra</i>	Twig: Green, often brittle with warty marks
	Buds: Ragged, often with leaves showing through broken bud scales
	Bark: Pale yellowish brown with warty marks on young stems, softly curly, deeply fissured
	Other: Flowers replaced by green to black berries



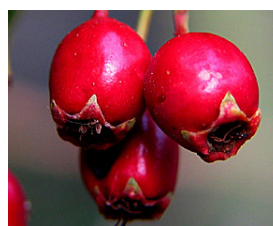
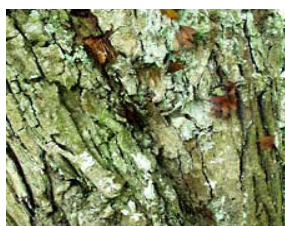
<b>Field Maple</b> <i>Acer campestre</i>	Twig: Pale Brown and hairy, after a year develop a layer in irregular vertical ridges
	Buds: Arranged in opposite pairs, with hairy bud scales
	Bark: Light brown, smooth at first becoming darker and furrowed
	Other: Two single seeded winged fruit (Keys)





## WINTER TREE ID

<b>Hawthorn</b> <i>Crataegus monogyna</i>	<b>Twig:</b> Small slender spines ( up to 3cm) which may or may not be close to buds
	<b>Buds:</b> Bud scale edges not hairy
	<b>Bark:</b> Smooth with greenish-grey / greenish-brown to darker grey
	<b>Other:</b> Usually with red berries. Usually one seed in the berry. NB two seeds in the berry of midland hawthorn

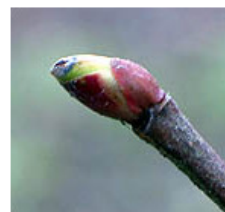


<b>Hazel</b> <i>Corylus avellana</i>	<b>Twig:</b> Pale brown and hairy with swollen tip
	<b>Buds:</b> Flattened, smooth and green. Arranged alternately or spirally and have more than 3 bud scales
	<b>Bark:</b> Smooth and shiny brownish red to greenish brown with horizontal warty marks
	<b>Other:</b> Recent growth of twigs hairy, with or without catkins



## WINTER TREE ID

<b>Common Lime</b> <i>Tilia × europaea</i>	<b>Twig:</b> Hairy especially at the tip, no thorns or spines, red to dull crimson in colour, strongly zig-zagging
	<b>Buds:</b> Pinkish to reddish with 2/3 scales, buds arranged alternately
	<b>Bark:</b> Smooth and greyish-green with darker markings becoming rough
	<b>Other:</b>

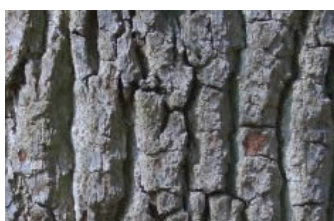


<b>Norway Maple</b> <i>Acer platanoides</i>	<b>Twig:</b> Hairless and brownish
	<b>Buds:</b> Deep red, not sticky, 3 or more bud scales which are not hairy, stout and often rounded, terminal buds often in pairs, arranged in opposite pairs set at 90° to the pairs up and below
	<b>Bark:</b> Smooth grey becoming shallowly fissured
	<b>Other:</b>

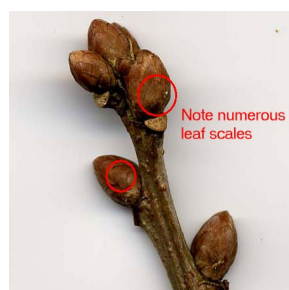


## WINTER TREE ID

<b>Pedunculate / English Oak</b> <i>Quercus robur</i>	<b>Twig:</b> Grey-brown with warty marks
	<b>Buds:</b> Pale red-brown with many bud scales (<20), not downy, Terminal buds clustered at the tip, buds arranged alternately
	<b>Bark:</b> Smooth at first becoming rugged giving a fissured grey trunk
	<b>Other:</b> Acorn cups on long stalks



<b>Sessile Oak</b> <i>Quercus petraea</i>	<b>Twig:</b> Dark grey-brown, partly purplish
	<b>Buds:</b> Pale red brown with many bud scales (often >20), Terminal buds clustered at the tip, buds arranged alternately
	<b>Bark:</b> Grey and finely fissured
	<b>Other:</b> Acorn cup sitting directly on the twigs





## WINTER TREE ID

<b>Sweet Chestnut</b> <i>Castanea sativa</i>	Twig: Shiny, smooth or slightly downy with warty marks
	Buds: Pinkish brown to yellowish green, oval and bluntly pointed, buds arranged alternately
	Bark: grey with horizontal fissures
	Other: Fruit case is spiky



<b>Sycamore</b> <i>Acer pseudoplatanus</i>	Twig: Young green paired twigs turning light brown
	Buds: Green, single terminal bud, arranged in opposite pairs set at 90° to the pairs up and below, 3 or more bud scales which are not hairy
	Bark: Grey and smooth
	Other: Winged fruits hang in bunches



## WINTER TREE ID

<b>Silver Birch</b> <i>Betulus pendula</i>	Twig: slender purplish brown hairless with raised whitish warts
	Buds: Blunt, ovoid buds, purple – brown in colour, small and insignificant
	Bark: Silvery white with diamond shaped patches
	Other: Catkins usually present



<b>Wild Cherry</b> <i>Prunus avium</i>	Twig: Greyish-brown
	Buds: 2 or more in clusters often on short lateral shoots, 1 or 2 terminal buds, more than 3 bud scales, arranged spirally
	Bark: Distinctive horizontal marks, smooth and shiny appearance
	Other: When wounded a clear yellow-green gum oozes out





## WINTER TREE ID

<b>Wych Elm</b> <i>Ulmus glabra</i>	<b>Twig:</b> Stout and downy, red/brown,
	<b>Buds:</b> Chocolate brown, hairy, arranged alternately, more than 3 bud scales
	<b>Bark:</b> Smooth and silvery-grey when young, becomes dull grey and deeply fissured
	<b>Other:</b>

